



# L/B NT Flagman Class 230

Official No.: 1254559



# LIFTBOAT "NT Flagman"

CLASS 230  
USCG CERTIFIED  
Official No.: 1254559

## GENERAL DIMENSIONS

Length (Overall)	"137'-0"
Length (Barge Only)	"131'-5"
Beam (Overall)	"78'-0"
Beam (Barge Only)	"44'-0"
Depth (Barge Only)	"14'-0"
Open Deck Area	5500 Sq. Ft.

## HULL CHARACTERISTICS

Gross Tonnage	153 Tons Net
Tonnage	103 Tons
Maximum Deck Cargo	800,000 lbs.

## PADS

Length	"32'-0"
Width	"16'-0"
Depth	"2'-5"
Configuration	Raked

## JACKING

Max. Working Water Depth	180'-0"
Max. Sea Conditions (Jacking Up or Down)	5'
Total Jacks	24
Total Jacking Rating	2520 S-Tons
Total Holding Rating	3360 S-Tons

## LEGS

Quantity	3
Length	230'-0"
Size	78" O.D."
Wall Thicknesses	"3/4" to 1.25"

## LIVING QUARTERS

Crew Accommodations	7
VIP Accommodations	2
PACS Accommodations	34
Total	43
Central A/C and Heat	
1 - Clerk's Office	
2 - Lounges with: Color TV, Sofas, and Lounge Seats	
10 - Heads -All Levels	
23 - Galley Seats	
Laundry Area 3 - Washers/Dryers	

## ELECTRONICS

VHF, SSB, Loud Hailer, Radar,  
Fathometer, GPS,  
Tilt Alarm, V-SAT Communication  
Package with 8 Phone Lines and Internet  
Access, Gaitronics System

## PROPULSION

(2) Main Engines	CAT C-32
(2) Reduction Gear	TWIN DISC 6:1

## GENERATORS

(2) 200kw Generators	Cat 7.1
----------------------	---------

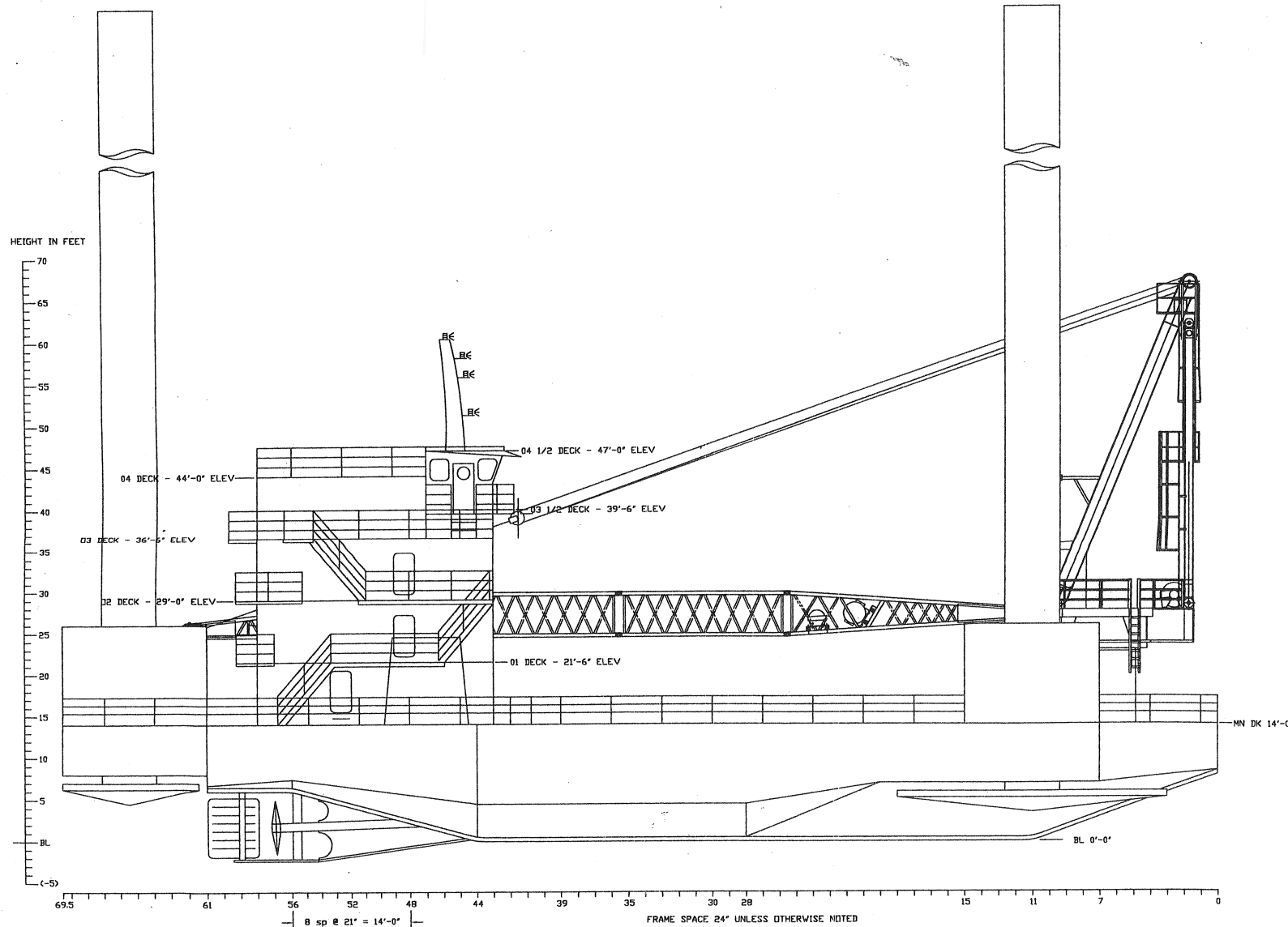
## CRANES

Port - Tech Crane L-500:	
250 Ton	100' Lattice Boom
Stbd - Tech Crane T-120:	
60 Ton	100' Telescopic Boom

## CAPACITIES

Fuel Oil (Approx.)	29,942 Gals.
Potable Water (Approx.)	29,494 Gals.

# L/B NT Flagman



## GENERAL INFORMATION

HULL LENGTH	137'-0"
HULL WIDTH	78'-0"
HULL DEPTH	14'-0"
FOOTING LENGTH	32'-0"
FOOTING WIDTH	16'-0"
FOOTING DEPTH	2'-6"

THIS DOCUMENT IS PROPRIETARY INFORMATION  
 COPYRIGHT © 2014 DYNAMICS MARINE, INC.  
 ALL RIGHTS RESERVED, THIS IS A TRADE  
 SECRET PROTECTED BY FEDERAL LAW, SEE  
 18 U.S.C. §§ 1831-1839 ECONOMIC ESPIONAGE  
 ACT OF 1996

FOR CONRAD HULL NO. C-1071

### REVISIONS

DYNAMICS MARINE, INC.  
 2483 LITTLE LANE-NE, WESSON, MS 39191  
 601-695-4363

CONRAD SHIPYARD, LLC

OFFSHORE LIFTBOATS, LLC

CLASS 230 LIFTBOAT  
 OUTBOARD PROFILE

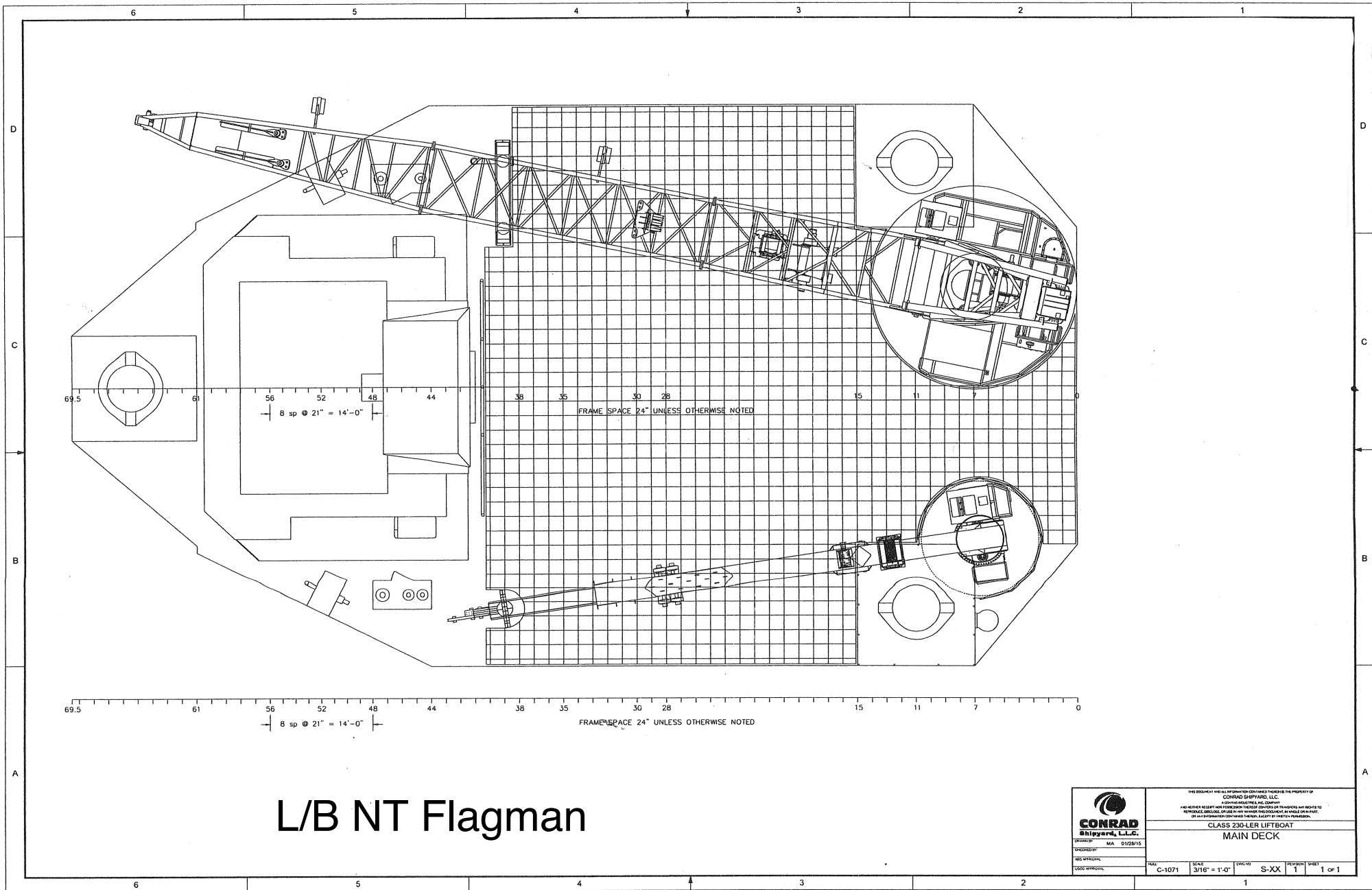
DATE: 29SEP13

APPV:

BY: GILLY

NO: GA-01

OUTBOARD PROFILE  
 SCALE 3/16" = 1'-0"

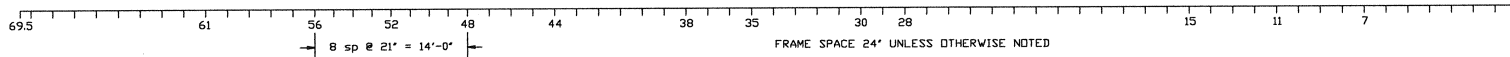
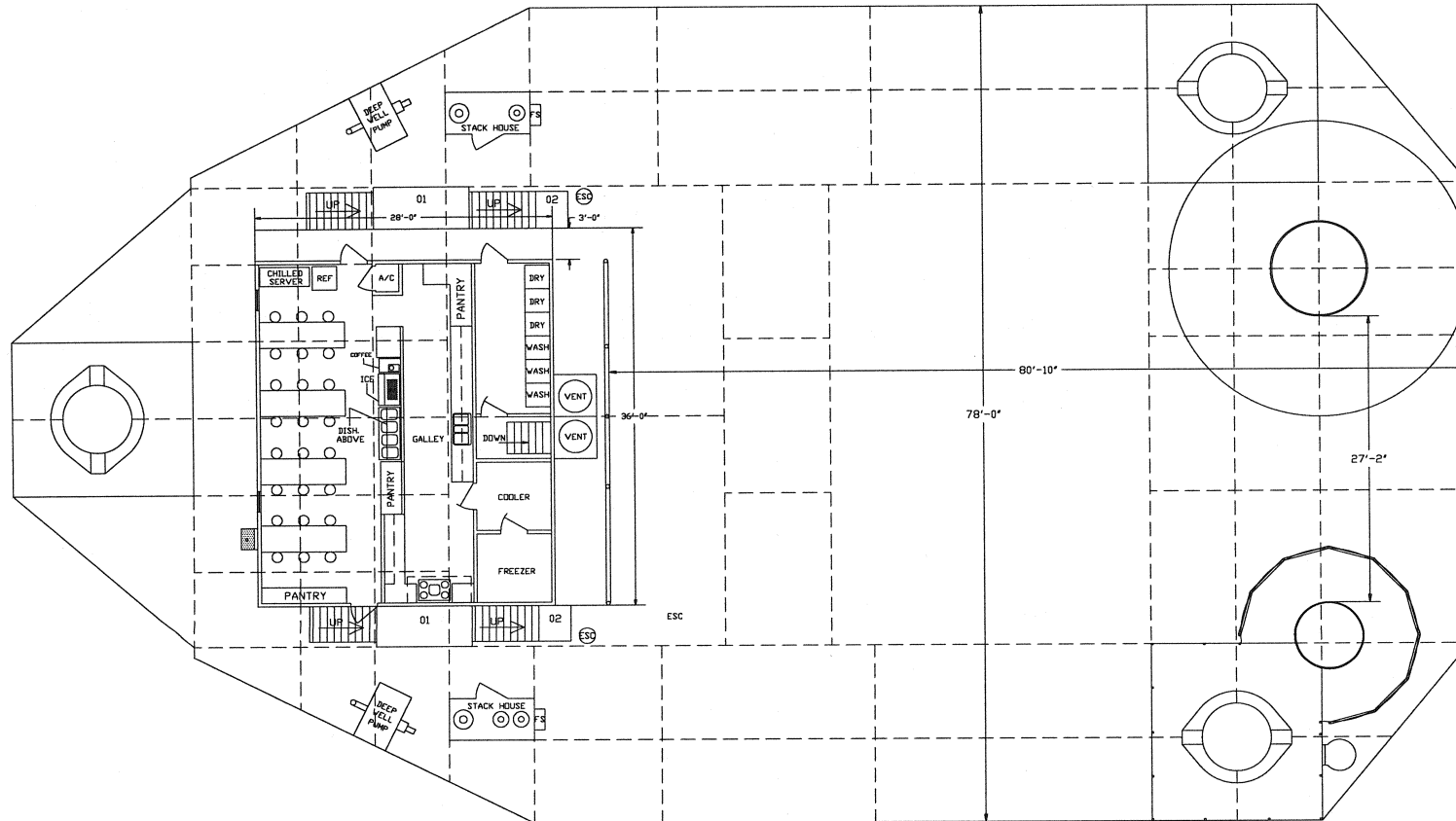


# L/B NT Flagman

	<small>THIS DOCUMENT AND ALL INFORMATION CONTAINED HEREIN IS THE PROPERTY OF CONRAD SHIPYARD, L.L.C. A FORMER DIVISION OF CONRAD. NO PART OF THIS DOCUMENT IS TO BE REPRODUCED, STORED, OR USED IN ANY MANNER WITHOUT THE WRITTEN PERMISSION OF CONRAD SHIPYARD, L.L.C.</small>			
	<b>CLASS 230-LER LIFTBOAT</b> <b>MAIN DECK</b>			
<small>OFFICE:</small> MA 01228/15 <small>DESIGNED BY:</small> <small>DATE:</small> <small>SCALE:</small>	<small>TITLE:</small> C-1071	<small>SCALE:</small> 3/16" = 1'-0"	<small>NO. OF SHEETS:</small> S-XX	<small>REVISION:</small> 1 <small>SHEET:</small> 1 of 1

# L/B NT Flagman

## GENERAL INFORMATION



GENERAL ARRANGEMENT MAIN DECK

SCALE 3/16" = 1'-0"

FOR M/V LAUREN FRANCIS CONRAD C-1071

### REVISIONS

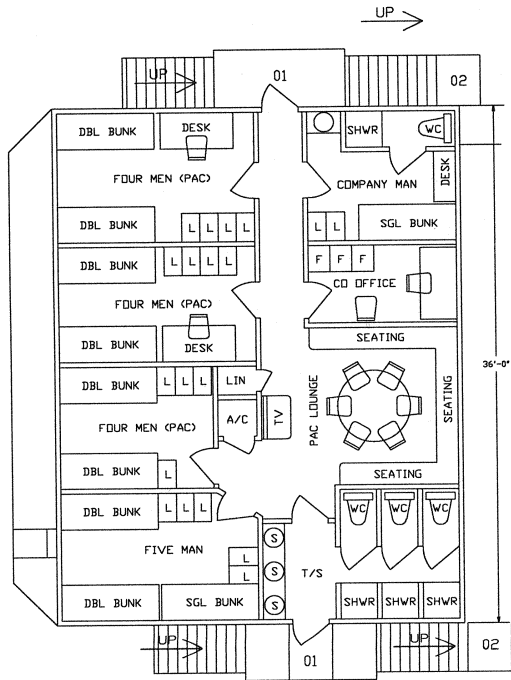
DYNAMICS MARINE, INC.  
2483 LITTLE LANE - NE, WESSON, MS 39191  
601-695-4363

CONRAD SHIPYARDS, LLC.

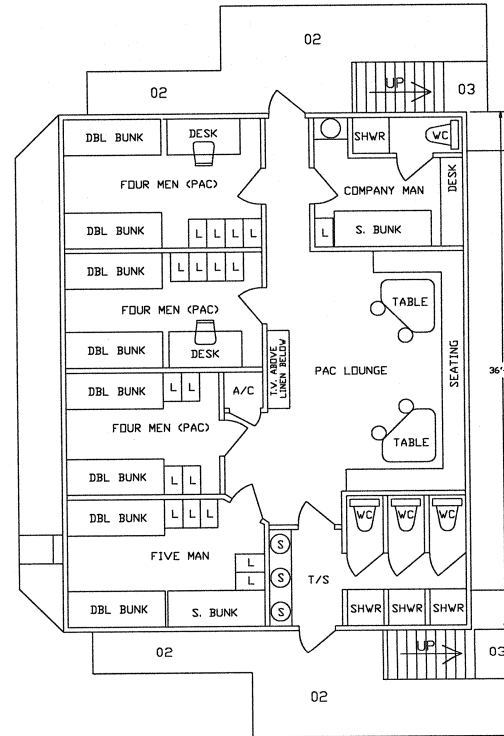
OFFSHORE LIFTBOATS, LLC.  
CLASS 230 LIFTBOAT  
MAIN DECK ARRANGEMENT

DATE:	APPV:
BY: GILLY	NO: GA-03

# L/B NT Flagman



GENERAL ARRANGEMENT 01 LEVEL  
SCALE 1/4" = 1'-0"



GENERAL ARRANGEMENT 02 LEVEL  
SCALE 1/4" = 1'-0"

FOR M/V LAUREN FRANCIS CONRAD C-1071

REVISIONS

DYNAMICS MARINE, INC.  
2483 LITTLE LANE - NE, WESSON, MS 39191  
601-695-4363

CONRAD SHIPYARDS, LLC.

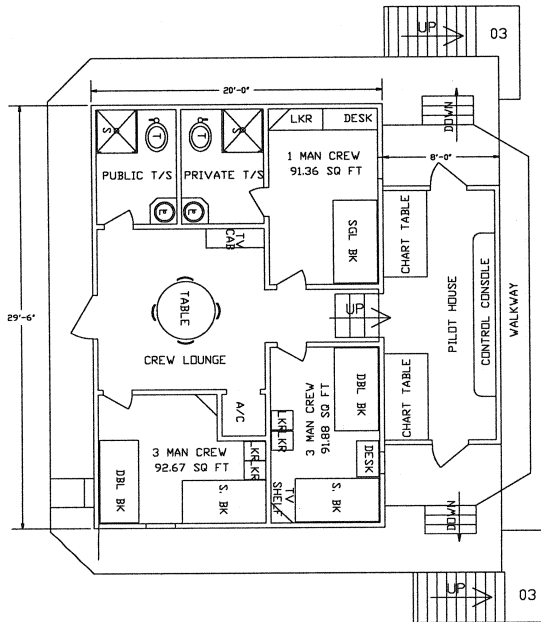
OFFSHORE LIFTBOATS, LLC.

GENERAL ARRANGEMENT 01 AND 02 DECKS

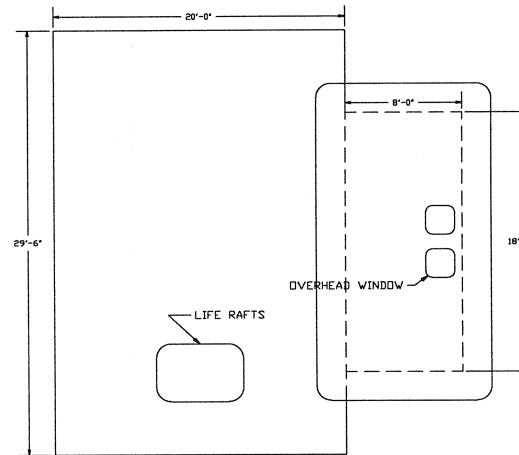
DATE: 05JAN14 APPV:

BY: GILLY NO: GA-04

# L/B NT Flagman



GENERAL ARRANGEMENT 03 LEVEL  
SCALE 1/4" = 1'-0"



GENERAL ARRANGEMENT 04 LEVEL  
SCALE 1/4" = 1'-0"

FOR CONRAD HULL NO. C-1071

REVISIONS

DYNAMICS MARINE, INC.  
2483 LITTLE LANE-NE, WESSON, MS 39191  
601-695-4363

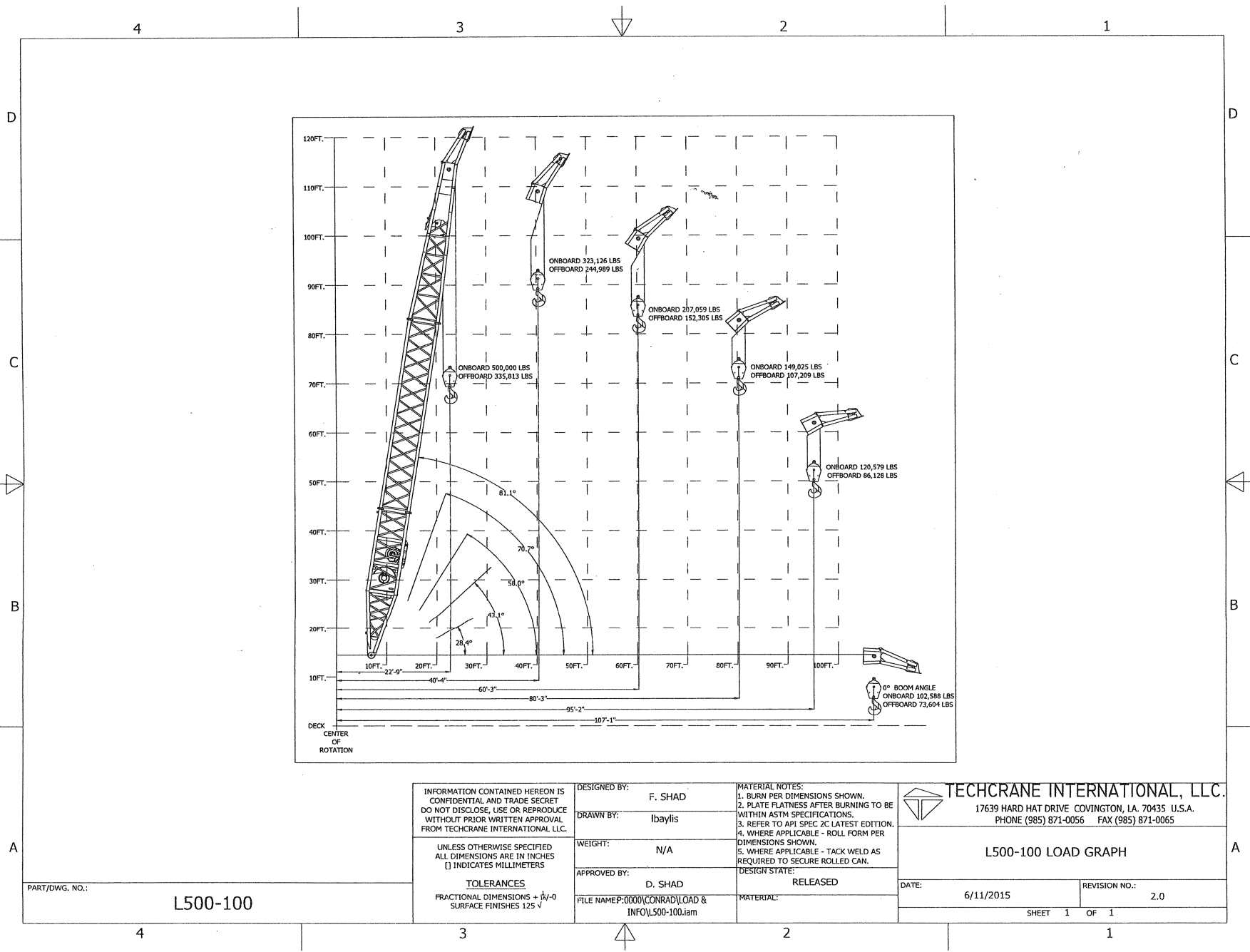
CONRAD SHIPYARD, LLC

OFFSHORE LIFTBOATS, LLC

CLASS 200-LER LIFTBOAT  
GENERAL ARRANGEMENT 03 AND 04 DECKS

DATE: 29SEP13 APPV:

BY: GILLY ND: GA-05



INFORMATION CONTAINED HEREON IS CONFIDENTIAL AND TRADE SECRET DO NOT DISCLOSE, USE OR REPRODUCE WITHOUT PRIOR WRITTEN APPROVAL FROM TECHCRANE INTERNATIONAL LLC.

UNLESS OTHERWISE SPECIFIED ALL DIMENSIONS ARE IN INCHES ( ) INDICATES MILLIMETERS

**TOLERANCES**  
FRACTIONAL DIMENSIONS + .000/-0 SURFACE FINISHES 125 V

DESIGNED BY: F. SHAD

DRAWN BY: lbaylis

WEIGHT: N/A

APPROVED BY: D. SHAD

FILE NAME: P:0000\CONRAD\LOAD & INFO\L500-100.iam

**MATERIAL NOTES:**  
1. BURN PER DIMENSIONS SHOWN.  
2. PLATE FLATNESS AFTER BURNING TO BE WITHIN ASTM SPECIFICATIONS.  
3. REFER TO API SPEC 2C LATEST EDITION.  
4. WHERE APPLICABLE - ROLL FORM PER DIMENSIONS SHOWN.  
5. WHERE APPLICABLE - TACK WELD AS REQUIRED TO SECURE ROLLED CAN.

DESIGN STATE: RELEASED

MATERIAL:

**TECHCRANE INTERNATIONAL, LLC.**  
17639 HARD HAT DRIVE COVINGTON, LA. 70435 U.S.A.  
PHONE (985) 871-0056 FAX (985) 871-0065

**L500-100 LOAD GRAPH**

DATE: 6/11/2015 REVISION NO.: 2.0

SHEET 1 OF 1

PART/DWG. NO.: **L500-100**



4

3

2

1

D

C

B

A

16.0		
9.9		
Techcrane International, LLC		
Crane Model	Job Number	Serial Number
T120-58-100	1246	T12058100T1029
Offshore Liftboats		
Installation type: Bottom Supported Structure		
Method: Legacy Dynamic Method NO LIST, NO TRIM, NO MOTION		

FULLY RETRACTED LOAD CHART							FULLY EXTENDED LOAD CHART						
Reach Main Line (Feet)	Boom Angle Main Line (Deg)	Onboard Load (Pounds)	Offboard Load (Pounds) WITH Cv=2	Aux. Load line (Pounds)	Onboard Personnel Rated load using Main line (Pounds)	Personnel Rated load using Aux. line (Pounds)	Reach Main Line (Feet)	Boom Angle Main Line (Deg)	Onboard Load (Pounds)	Offboard Load (Pounds) WITH Cv=2	Aux. Load line (Pounds)	Onboard Personnel Rated load using Main line (Pounds)	Personnel Rated load using Aux. line (Pounds)
10	80.1	120,000	110,900	9,000	11,848	4,500	10	83.5	98,340	61,840	9,000	11,848	4,500
15	78.0	112,090	101,900	9,000	11,848	4,500	15	80.5	84,040	56,973	9,000	11,848	4,500
20	73.0	93,940	85,400	9,000	11,848	4,500	20	78.0	68,090	52,984	9,000	11,848	4,500
25	68.0	80,740	73,400	9,000	11,848	4,500	25	75.0	59,290	49,534	9,000	11,848	4,500
30	62.0	71,390	64,055	9,000	11,848	4,500	30	72.0	52,690	46,523	9,000	11,848	4,500
35	56.0	64,240	55,560	9,000	11,848	4,500	35	69.0	46,640	43,873	9,000	11,848	4,500
40	50.0	58,740	49,015	9,000	11,848	4,500	40	66.0	42,515	41,538	9,000	11,848	4,500
45	43.0	54,065	43,686	9,000	11,848	4,500	45	63.0	41,140	37,690	9,000	11,848	4,500
50	35.0	50,490	39,020	9,000	11,848	4,500	50	59.5	35,090	33,651	9,000	11,848	4,500
55	25.0	48,840	34,210	9,000	11,848	4,500	55	56.5	32,615	30,314	9,000	11,848	4,500
58	0.0	40,404	26,937	9,000	11,848	4,500	60	53.0	30,278	27,499	9,000	11,848	4,500
60	0.0	--	--	9,000	--	4,500	65	49.5	28,215	25,080	9,000	11,848	4,500
							70	45.5	26,290	22,964	9,000	11,848	4,500
							75	41.5	24,640	21,076	9,000	11,848	4,500
							80	37.0	23,265	19,355	9,000	11,632	4,500
							85	32.0	21,890	17,734	9,000	10,945	4,500
							90	26.0	20,790	16,125	9,000	10,395	4,500
							95	18.0	19,690	14,335	9,000	9,845	4,500
							100	0.0	15,668	10,164	9,000	7,834	4,500
							102	0.0	--	--	9,000	--	4,500

Load line wire rope: 1" Dyform 18  
 Breaking strength: 122,200 lbs  
 Working strength: 26,827 lbs  
 Weight of travel block: 2,157 lbs  
 Max. hook speed: 30 ft/min

Aux. line wire rope: 3/4" Dyform 18  
 Breaking strength: 64,800 lbs  
 Working strength: 12,456 lbs  
 Weight of Overhaul balk: 200 lbs  
 Max. hook speed: 200 ft/min

Reach = Center of base rotation to center of load line sheave.  
 The published load chart includes the weight of the block and rigging as stated above.

TECHCRANE INTERNATIONAL, 17639 HARD HAT DRIVE  
 COVINGTON, LOUISIANA 70435 U.S.A.  
 BUS: 985-871-0056 | FAX: 985-871-0065 | E-MAIL: sales@techcrane.com

PART/DWG. NO.:

INFORMATION CONTAINED HEREON IS CONFIDENTIAL AND TRADE SECRET DO NOT DISCLOSE, USE OR REPRODUCE WITHOUT PRIOR WRITTEN APPROVAL FROM TECHCRANE INTERNATIONAL LLC.

DESIGNED BY: F. SHAD  
 DRAWN BY: A.GUIDRY

MATERIAL NOTES:  
 1. MATERIAL: WHITE PLASTIC.  
 2. FACE TO BE LASER ETCHED WITH NOMENCLATURE & LINEWORK

UNLESS OTHERWISE SPECIFIED ALL DIMENSIONS ARE IN INCHES [ ] INDICATES MILLIMETERS

TOLLERANCES  
 FRACTIONAL DIMENSIONS +.000 -0 SURFACE FINISHES 125

WEIGHT: N/A

APPROVED BY: D. SHAD

FILE NAME: \WORK\PROJ\DESIGN\1246\OFFSHORE\T12058100T1029.DWG

DESIGN STATE: RELEASED

MATERIAL: --

TECHCRANE INTERNATIONAL, LLC.  
 17639 HARD HAT DRIVE COVINGTON, LA. 70435 U.S.A.  
 PHONE (985) 871-0056 FAX (985) 871-0065

OFFSHORE LIFTBOATS  
 T120-58-100 - API LOAD CHART

DATE: 02/27/15 REVISION NO.: 2.3

SHEET 1 OF 2

4

3

2

1

D

C

B

A